

concepts of subjective meaning and subjective configuration a contribution to health studies

RESUMO | Objetivo: analisar a literatura das produções de González Rey em relação ao conceito de sentido subjetivo e a configuração subjetiva em diferentes contextos de vida. Método: trata-se de uma revisão sistemática com publicações nos anos de 1999 a 2019. González Rey. Realizou-se uma busca no Portal de Periódicos da Capes, utilizando as bases Springer, Elsevier, Science Direct Journals, Scientific Electronic Library Online - SciELO e Open Access Journal. Os descritores foram “sentido subjetivo González Rey” e “Configuração Subjetiva González Rey”. Resultados: foram identificados 64 artigos, destes 12 se enquadraram nos critérios de inclusão. Percebeu-se que há poucos estudos sobre o sentido subjetivo e suas configurações subjetivas associados e voltados para aprendizagem e desenvolvimento; os conceitos têm por consenso a avaliação subjetiva e a multidimensionalidade; predominam os estudos subjetivos; os resultados variam em diferentes contextos estudados. Conclusão: conclui-se que o indivíduo representa um momento essencial de sua constituição subjetiva.

Descritores: Satisfação pessoal; Estudantes; Psicologia.

ABSTRACT | Objective: to analyze the literature of González Rey's productions in relation to the concept of subjective meaning and subjective configuration in different contexts of life. Method: this is a systematic review with publications from 1999 to 2019. González Rey. A search was carried out on the Capes Journals Portal, using Springer, Elsevier, Science Direct Journals, Scientific Electronic Library Online - SciELO and Open Access Journal databases. The descriptors were “subjective sense González Rey” and “Subjective Configuration González Rey”. Results: 64 articles were identified, of which 12 met the inclusion criteria. It was noticed that there are few studies on the subjective sense and its associated subjective configurations and focused on learning and development; concepts are based on subjective evaluation and multidimensionality; subjective studies predominate; results vary in different contexts studied. Conclusion: it is concluded that the individual represents an essential moment of his subjective constitution.

Keywords: Personal satisfaction; Students; Psychology

RESUMEN | Objetivo: analizar la literatura de las producciones de González Rey en relación al concepto de significado subjetivo y configuración subjetiva en diferentes contextos de la vida. Método: se trata de una revisión sistemática con publicaciones de 1999 a 2019. González Rey. Se realizó una búsqueda en el Portal de Revistas de la Capes, utilizando las bases de datos Springer, Elsevier, Science Direct Journals, Scientific Electronic Library Online - SciELO y Open Access Journal. Los descriptores fueron “sentido subjetivo González Rey” y “Configuración Subjetiva González Rey”. Resultados: Se identificaron 64 artículos, de los cuales 12 cumplieron con los criterios de inclusión. Se notó que existen pocos estudios sobre el sentido subjetivo y sus configuraciones subjetivas asociadas y enfocados en el aprendizaje y desarrollo; los conceptos se basan en la evaluación subjetiva y la multidimensionalidad; predominan los estudios subjetivos; los resultados varían en los diferentes contextos estudiados. Conclusión: se concluye que el individuo representa un momento esencial de su constitución subjetiva. nsos, principalmente a través de la educación en salud y la visita domiciliaria, actuando sobre las principales necesidades identificadas.

Palabras claves: Atención de enfermería; Hipertensión; Cuidados personales.

José Xavier Rodovalho

Pedagogue, Professor, PhD in Psychology from the Pontifical Catholic University of Goiás-PUC-GO.
ORCID: 0000-0002-0432-2571

Marieli Basso Bolpato

Nurse, Professor, PhD in Psychology from the Pontifical Catholic University of Goiás - PUC-GO.
ORCID: 0000-0002-7923-2343

Alda Nazaré Santos do Nascimento

Pedagogue, PhD in Psychology from the Pontifical Catholic University of Goiás PUC-GO, Goiânia, Brazil.
ORCID: 0000-0003-2292-6034

Vannúzia Leal Andrade Peres

Psychologist, Professor, Post Doctorate in Education from the University of Brasília-UNB.
ORCID: 0000-0002-7323-0654

Recebido em: 12/04/2023

Aprovado em: 04/05/2023

INTRODUCTION

Subjectivity goes much further than categorizing the subject, due to the fact that there is no way to standardize the human being since several aspects differentiate him from the other, it is not possible to carry out this comparison or understand the indi-

vidual by framing it in schemes already ready and established in the scientific environment. Viewing a different look for this new study, it would not be different to think about subjectivity from another perspective.¹

To González Rey¹ from the moment that Psychology and the other social sciences perceive the theme of subjectivity as something dynamic and of human production, this thought distances itself from a standardized knowledge with predictions, dominated by the forms of power and order of Western society.

Subjectivity is a human production that is constituted from the specific experiences of each individual, it is not something internal or external to the subject, but something formed in the dynamics of their experiences that will favor each one

ilustrative Photo: Freepik



present subjective configurations of the subject and the development of the course of his action, and the multiplicity of contrary effects resulting from this action, are associated with new productions of subjective meanings.^{1,3} In other words, subjective meaning is defined as the inseparable unity of symbolic and emotional processes in the same system, in which the presence of one of these elements evokes the other, without being absorbed by the other.³

“

In this context, subjectivity is produced through cultural practices in society according to the understanding of representations, values, beliefs experienced in everyday life. This author does not accept the idea that subjectivity is a mere epiphenomenon of the subject's discursive practices in society from the moment he considers the subject as complex and multicausal, without categorizing him.^{2,3}

”

In this production of new subjective meanings, another concept presented by González Rey arises, namely subjective configurations. For González Rey⁴

We can thus understand that the subjective sense is the result of the subjective configuration that is organized around the lived experience. It is the result of a subjective configuration organized in the course of human experience itself, in which the different personality configurations involved in this process actively participate, in the form of different subjective meanings.^{1,4}

To González Rey^{1,2,4} the cultural historical representation developed in the last twenty years recognizes symbolic aspects, the cultural and social dimension being essential in this development process, but which had previously been denied by medicine and the legal area, sciences that value objectivity.

It is an alternative in understanding a conceptual framework that allows incorporating the subjective dimension of the analysis of complex and dynamic man issues, being considered qualitative in its investigation of the production of the human being inserted in a network of diversity of aspects that influence and are influenced, directly and indirectly.⁴

The development of human beings according to the theory of subjectivity is not linear and predictable from the moment there is human interaction in society. When interacting with others, the individual is faced with patterns and social controls that exert a great influence, preventing the subject from expressing all his desires and emotions.^{3,4} It is in this encounter with the other that new subjectivities are produced that form a network of subjectivities in the development of their lives.^{2,5}

It is in this encounter with the other that new subjectivities are produced that form a network of subjectivities in the development of their lives.^{4,5} These ways of thinking and feeling are sometimes different from what is expected by social norms, but which are constituted

in a differentiated way to be critical and autonomous, capable of generating new practices.²

The Subjectivity Theory emphasizes the autonomous, creative and unique character of the human being, not having the concern to fit him into a certain category or standard. Seeks to understand it in the face of its uniqueness expressed through its subjective dimension and in the interaction with the other in society.^{1,2} In this vein, understanding subjectivity according to González Rey's studies transports the researcher to a different dimension from other theories of social research, providing a study that is freer from the constraints of categorization and something established by the proposed scientific environment.

From the vision of González Rey,² the subjective meaning is inseparable from subjectivity as a system, because at each moment of production of subjective meaning there is a tense, multiple and contradictory integration between the

by the individual through his experiences as a social being. With this, the objective of this article was to analyze, through the literature review of productions by González Rey, the concept of subjective meaning and subjective configurations in different contexts of life.^{1,3,5}

METHOD

The present study followed the recommendations of the Preferred Reporting Items for Systematic Reviews and Meta-Analyses (PRISMA), which aims to guide the dissemination of systematic literature reviews (SLR) and meta-analyses in the health area.⁶ However, this study is an SLR without meta-analysis.

An electronic search of theoretical, qualitative and complete studies was conducted to locate those that evaluated the conceptual relationship of subjective meaning and subjective configurations throughout the studies of González Rey in the period from 1999 to 2018.

To carry out the bibliographical survey, indexed articles and books found in the Capes Portal (Springer, Elsevier, ScienceDirect Journals, ScientificElectronic Library Online - SciELO and Open Access Journal) were used, in the expanded versions.

In the direction of the electronic search in the selected databases, the descriptors "subjective sense Gonzalez Rey" and "Configuração Subjetiva González Rey", in Portuguese and English (subjective sense Gonzalez Rey; Subjective Configuration González Rey) were used. The Boolean operator "and" was used to associate the descriptors during the search.

Queries in the databases were carried out from November 2022 to March 2023. The search was carried out using the option "any", 08 articles in Portuguese and 04 books in English were identified, between 1999 and 2019, totaling 12 articles/books found.

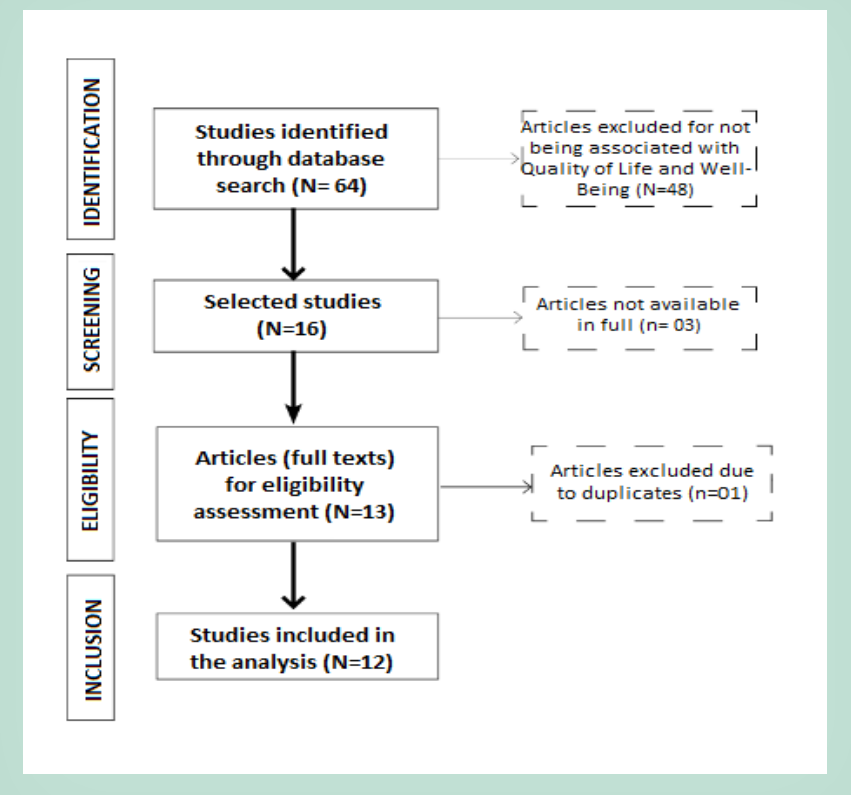
The inclusion criteria consisted of the selection of empirical articles, from peer review, available and complete, published in Capes journals and articles that addressed the subject the concepts of subjective sense and subjective configuration in an associated manner. Therefore, the exclusion criteria consisted of discarding studies not available in full, articles that in the theme and/or subject presented a complete definition of subjective meaning and subjective configuration without association of constructs, repeated articles, systematic review articles, editorials and expanded abstracts.

Figure 1 presents the PRISMA flowchart, explaining the processes for carrying out the systematic review, with a complete description of all phases of the study according to the chosen inclusion criteria.

According to Figure 1, 64 articles were identified in the databases. Next, we opted for a careful reading of the articles in their entirety, focusing on articles and books that contemplated subjective meaning and subjective configuration in an associated way in the summaries and/or abstracts, content, with the title addressing subjective meaning or subjective configuration and, finally, studies only authored by Luis Fernando González Rey.

Therefore, 48 articles that were not included in the inclusion criteria (association of subjective meaning and subjective configuration) were excluded, and 16 articles that met the objectives were then selected. In the continuity 03 articles were not available in full, remaining in the eligibility 13 articles

Figure 1. Flow of information with the different databases of the PRISMA systematic review about the concepts of subjective meaning and subjective configuration.⁶



Source: Prepared by the authors themselves, 2023.

and, among these, 01 article was excluded for duplicity. A total of 12 articles were included in the analysis by reading the abstracts, verifying compliance with the determined inclusion criteria.

The analyzes of the articles by means of titles, summaries and/or abstracts were performed by two judges separately, in a double blind trial and later, a third judge carried out the evaluation and final analysis.

The 12 final articles were analyzed in full and classified into the following categories: year of publication; study ob-

jectives; concept of subjective meaning and subjective configuration; goal; methodology (type of study; participants); results found and the main evidence.

RESULTS

Regarding the objectives of the studies, these could be perceived in two main approaches: 1) interpreting subjective meanings and subjective configurations in the context of general health and 2) analyzing the conceptual description of

concepts over the years by the same author. With regard to assessing the subjective senses and subjective configurations in general health, they were focused on investigating the individual and collective perceptions of individuals based on subjective parameters (emotions).^{1,4,7}

With regard to concepts based on subjective meanings, the main quotations found in the books and periodicals accessed are as follows (Chart 1). We can see that the concept of subjective meaning is dynamic over the years, but it does not alter Fernando González's initial conceptual synthesis (Frame).

With regard to the concepts of subjective configuration, it was possible to observe that the studies comprise from 03 major categories (Table 1), which are:

- 1- The subjective configuration represents a very complex system of subjective meanings that, in their permanent relationship, can have very diverse and contradictory moments in different contexts of the subject's life (González Rey)^{2,3,5,6,8}.
- 2- The subjective configuration emphasized the character of the stability or frequency with which subjective elements were produced in concrete moments and contexts of the person's life.^{2,6,8} and,
- 3- Subjective configuration are subjectivity organization units produced in the face of lived experiences, which in the case of individual subjectivity integrate subjective meanings of the personality, and new subjective meanings produced in the course of action, associated with social subjectivity, to relational systems and to the individual's course of action in some domain.^{1,4,6,7,8,9}.

It is noticeable that the concept of subjective meaning, traditionally approached as symbology over the years, has been appropriated in psychology studies with more specific and directed approaches in two great perspectives: symbolic units and singular perceptions. Thus, the concept of subjective sense emphasizes individual perceptions in relation to their positive and negative experiences in ways of experiencing them psycholo-

Chart 1: Concepts of subjective meanings cited in articles and books by Gonzalez Rey's productions, 1999 to 2019.

References	Conceito de sentido subjetivo
González Rey ^{2,3,4,5,6,7}	Subjective meanings are constituted in the subject's formation process and, permanently undergo alterations, influence the constitution of new meanings, are organized by thought, externalized by language and integrate the constitution of the individual's subjectivity.
González Rey ^{1,3,4,5,6,7,8}	Subjective meaning is the relation of the symbolic to the emotional, and not just between the intellectual and the affective, which had been Vygotsky's focus. Finally, starting from the category of subjective meaning, in its relationship with the category of subjective configuration, I established an inseparable relationship between subjective meaning and subjectivity as a system.
González Rey ^{2,4,6,8,9}	Subjective meaning is "the inseparable unity of symbolic and emotional processes in the same system, in which the presence of one of these elements evokes the other, without being absorbed by the other.

Source: Prepared by the authors themselves, 2023.

Table 1: Concepts of subjective configuration cited in articles that use productions by Gonzalez Rey, 1999 to 2019.

References	Subjective configuration found concepts
González Rey ^{2,3,4,5,6,9}	The subjective configuration represents a process, which generates its own alternatives along the way. That is, this dynamic process provides the subject with unique experiences permeated by his subjective configurations experienced throughout his life and which influence other experiences in a unique way in the production of subjective meanings.
González Rey ^{5,7,9}	Subjective configurations are symbolic and emotional processes in which, simultaneously, conscious, intentional and unconscious aspects coexist, which define a subjective configuration, which represents a new system in relation to those subjective senses that give rise to it.
González Rey ^{2,3,5,8,9}	The subjective configuration is a dynamic system that expresses a particular psychological meaning and, simultaneously, appears as expanded and articulated with other configurations that enter into another system of personality meaning. Every subjective configuration responds both to intrapsychic determinants, which express the permanent integration and disintegration of broader, more relevant configurations.

Source: Prepared by the authors themselves, 2023.

gically. Thus, the subjective sense goes beyond subjective perceptions of emotions and is directed to the realization of the individual human potential in its fullest fullness.^{2,6,10}

DISCUSSION

In this study, we investigated how the literature has appropriated the concept of subjective meaning and subjective configuration from the perspective of Distance Education students - EaD, as well as their main evidence.

The concept of subjective meaning is a subjective multidimensional construct derived from what is perceived individually or collectively, covering aspects related to the teaching-learning process, the style and environment in which one lives.^{2,4,10} From this one understands not only its multidimensionality, but its complexity as such characteristics are not uncausal or polarized; they are characteristics that are combined in the most diverse configurations or networks. The exposed subjective meaning concepts showed that the literature maintains a consensus in simultaneously evaluating the subjective questions of the students in broad dimensions and magnitudes of investigations and, they use subjective conceptual bases of subjective meanings as the emotions are produced by the students for a better understanding of the subjective configurations.

It is noticed that the concept of subjective meaning is better organized in the literature in relation to the subjective configuration when it is divided into two dimensions of conceptual understanding: emotions and subjective perceptions that individuals make individually and socially in relation to their experiences and experiences, looking for answers that help in the determination of the subjective configurations.^{3,7,10}

It was possible to verify that associated studies of subjective meaning and subjective configuration advance in the research in the sense of strengthening students' evalua-

“

Therefore, the concept of subjective meaning is the basic structuring of subjectivity in the psychological sphere through characteristics that may constitute the essence of the understanding of positive attitudes towards oneself and the acceptance of one's multiple aspects of personality (being, thinking and acting) in relation to self-experience and self-acceptance mediated by relationships that welcome and bring security in relation to satisfaction with other people or positive relationships with others.^{1,5,8,10}

”

tions not only in subjective ways, but in the deepening of subjective perceptions regarding the positive and negative experiences of the aging process, short and long term happiness and life expectancy, permeated.

However, it is still noticeable in some studies to verify a delay in the conceptual applicability that associates investigating simultaneously the subjective sense and the subjective configuration. Perhaps this is due to the dispersion of the specific objectives of each study in evaluating both, showing a tendency to prioritize more specifically the concept of one or the other construct, thus making this conceptual correlation itself unsatisfactory.¹⁰

It would be desirable to incorporate knowledge about the subjective aspects of learning and development in teacher training programs, as well as alerting them to the use of the relational space in the classroom as a context highly involved with teaching and learning. It is precisely the relationship systems within the classroom that allow the development of students' subjective resources.^{10,11}

It is evident that learning is a function of the subject and that it is strongly impacted by the interweaving of individual and social subjectivity, in which the diversity of subjective meanings appears as an outbreak of the singularities of students and teachers.¹¹

CONCLUSION

The concept of subjective configuration designates the subjective constitution of the different forms of activity and relationship of the subject within the social system in which it develops. The configuration responds simultaneously to the history of the developing personality, of which it is an essential part, as well as to the events that characterize each of the moments in the subject's life in those activities or forms of relationship subjectively constituted in the personality configurations.

And therefore, every subjective configuration simultaneously expresses the dialectical relationship of a constituted subjective meaning and a reality that, even when existing for the subject within the limits of his subjective meaning, is not exhausted in this, imposing from his own condition of existence, continuous limits and contradictions to the formation of the subjective meaning that characterizes its constitution in the concrete psychological subject.

The individual's constructions are inserted within a complex system of determinants, among which personality is

one more, which is expressed in experiences that mediate the entire construction process, about which the subject is often not clearly aware.

The individual represents an essential moment of his subjective constitution, but his meaning in relation to this does not end in his intentional expression, also implying the multiple emotions and meanings that are produced as a consequence of this expression, about which he does not have a conscious representation.

The limitations found in the literature review were based on the last twenty years covering only the databases con-

tained in CAPES journals.

Finally, it is considered that the objectives of this literature review were achieved, showing that the theme demands a continuous deepening and production of new evidence that even favor the strengthening of related public health policies. 🐦

References

- 1-González RLF. La afectividade desde una perspectiva de la subjetividad. *Revista Teoria e Pesquisa*. 1999; 16(2): 224-235.
- 2-González RLF. Locualitativo y locuantitativo: en La investigación de La psicología social. *Revista Cubana de Psicología*. 2000; 03(1): 80-94.
- 3-González RLF. A pesquisa e o tema da subjetividade em educação. *Revista Psicologia da Educação*. 2001; 14(2): 14-28.
- 4-González RLF. Contribuições e consequências de uma representação histórico-cultural a respeito da subjetividade na prática terapêutica. *Revista Ibero-Americana*. 2002; 8(1): 10-22.
- 5-González RLF. Subjetividade social, assunto e representações sociais. *Revista Perspectivas em Psicologia*. 2004; 4(2): 225-243.
- 6-Galvão TF. Principais itens para relatar Revisões sistemáticas e Meta-análises: A recomendação PRISMA. *Revista Epidemiologia e Serviços de Saúde*. 2008; 24(2): 335-342.
- 7-González RLF. La significación de Vygotsky para la consideración de lo afectivo en la educación: las bases para la cuestión de La subjetividad. *Revista Eletronica "Actualidades Investigativas em Educação"*. 2009; 17(2): 46-57.
- 8-González RLF. (2011). *Subjetividade e Saúde*. Editora Universal. 2011. 32-67.
- 9-González RLF. Subjetividad, cultura e investigación cualitativa en psicología: la ciencia como producción culturalmente situada. *Liminales. Escritos sobre psicologías y sociedad*. Universidad Central de Chile. 2013; 2(3): 122-134.
- 10-González RLF, Patiño PJF (2017). La Epistemología Cualitativa y el estudio de la subjetividad en una perspectiva cultural-histórica. *Conversación con Fernando González Rey*. *Revista de Estudios Sociales*, (60), 120-127.
- 11-González RLF. Vygotsky "The Psychology of Art": A foundational and still unexplored text. *Revista Estudos de Psicologia (Campinas)*. 2018; 35(1): 339-350.



13º
congresso Nursing
BRASILEIRO
4º Congresso Internacional Saúde Coletiva
4º Congresso Internacional Feridas
FLORIANÓPOLIS

Inscrições Abertas!
Dias 27, 28
& 29 de Setembro.
acesse: congressonursing.com.br